



ACTIVE
TECHNOLOGIES

Products with a purpose.



TOMORROW'S VISION... *TODAY!*

Today, Active Concepts thrives in the rapidly evolving marketing environment by harnessing the latest technological advances to create novel products. Our ability to conceptualize, manufacture and locally supply raw materials differentiates us from the competition.

Flexible and dynamic use of our technology platforms allows for innovative development and offers the opportunity for customization and sustainability. Extensive expertise of several innovative biotechnologies allows for the transformation of naturally derived compounds into truly functional bioactive cosmetic ingredients.

We strive to provide a competitive edge in innovation and sustainable business initiatives, providing the personal care industry with value-added raw materials and unmatched customer service. Our mission is to fully support our customers by promoting and providing brand differentiation.

We want to help you achieve your vision!

We are what we
repeatedly do.

Excellence,

Therefore, is not an
act, but a habit.

Aristotle

We inspire our customers to create

THE COSMETICS OF TOMORROW

CUSTOMIZATION FOR BRAND DIFFERENTIATION

Flexible and dynamic use of our technology platforms allows for innovative development through modular design. We aim to provide the tools for brands to tell their story utilizing the latest biotechnology innovations.

At Active Concepts we are ready to provide you the technology, science, efficacy, and marketing to put your brand at the forefront of the industry!

• Customized Product Development

- Custom Blends
- Preference of Solvents
- Preferred Preservative
- Preferred Delivery System

• Brand Differentiation

- Unique ingredients, unavailable to others on the market

• Alternate Sourcing

- Allows customers to optimize cost and decrease lead times

Through our specific techniques, we provide preservative-free ingredients with a range of efficacious activities and unique origin stories.

In addition to product performance, we improve the sustainability performance of our customer's applications through improvement of the ecological footprint of our materials.

It will always be our policy to source locally grown ingredients whenever possible and to use botanical suppliers that adhere to fair trade practices. We are dedicated to supporting green technologies for the development and manufacturing of eco-friendly products.

SUSTAINABILITY AS ADDED VALUE





			Skincare	Haircare	Cosmos Approved	Tests - In Vivo	Tests - In Vitro	China Compliant	Anti-aging	Moisturising	Problem skin	Soothing	Antioxidant
Bioferments	12000	ACB Bio-Water Bamboo	●	●	●	●	●	*		●			
	20339PF	ACB Bio-Chelate 5 PF	●	●		●	●	●				●	
	20219PF	AC Dermal Respiratory Factor Advanced PF	●			●	●	●	●			●	
	20224PF	ACB Yogurt Respiratory Factor Advanced PF	●			●	●	*	●			●	
	16618	Probacillus Revive	●		●	●	●	●					
	20228	ACB Agave HSP	●		●	●	●	*				●	
	10950	AC Saccharomyces Ferment	●					●					
	12006	AC OleaShield	●		●		●	●	●				●
	20364G	ACB Lemon Peel Extract G	●				●	*	●				
	20349PF	ACB Olive Leaf Extract PF	●	●			●	*				●	
	20021SF	ACB Purslane Bioferment SF	●				●	*	●				●
20351PF	ACB Wasabi Extract PF	●	●			●	●				●		
Botanical Extracts	10568PF	ABS Coconut Water PF	●	●		●		●		●			
	11553	ABS Cactus Water SF	●	●				*		●			
	16905	BiEau® Actif Brown Algae	●		●	●	●	●	●	●			●
	20222AB	AC Alg-MoistEAU AB	●	●		●		●		●			
	10229	ABS White Willow Bark Extract Powder	●	●	●	●	●	●			●	●	
	20343LNZ	ACB Fruit Mix	●		●	●		●	●		●		
	11415	ABS Matcha Tea Extract PF	●		●			●					●
	20359PF	ACB Oat Extract Beta PF	●		●			*		●			
	10550	ABS Moringa Pterygosperma Seed Extract G	●			●		*	●				●
	11907	AC Watercress Extract SF	●				●	●	●				●
	20447	AC Party Face Pom	●			●	●	●	●				
	22064	AC Water Kefir PHA	●		●		●	●	●		●		
Complex Actives	20852	AcquaSeal® Algae	●		●	●	●	●	●	●			
	20757PF	AC Cytopure PF	●			●	●	*	●				●
	20024	ACB Wakame Bioferment Advanced	●			●	●	*	●			●	
	16587	Phyto-Biotics Acai®	●			●	●	●	●	●			
	12011	AC AmaraSense		●				●	●				
	16586	Phytofuse Renew®	●	●	●	●	●	*		●			●
	16882	Phytofuse Rejuvenate®	●			●	●	●				●	
	16634	AC Griffonia Lysate Advanced	●			●	●	*	●				
	20342PF	ACB Yerba Santa Glycoprotein PF	●		●	●	●	●				●	●
	16671	Revital-Eyes	●		●	●	●	●	●				
	16617	ProRevive BB Complex	●				●	*			●		
21005PF	AC Biopolymer Chia PF	●		●	●		●			●			

Innovation at the intersection of BIOTECHNOLOGY AND BEAUTY

			Skincare	Haircare	Cosmos Approved	Tests - In Vivo	Tests - In Vitro	China Compliant	Anti-aging	Moisturising	Problem skin	Soothing	Antioxidant
Delivery Systems	61005PFEUR	AC Hemp Oil Liposome PF	●		●	●	●	*				●	
	60050	AC MVS Lips	●			●		●	●				
	60147PF	AC HYA Liposome PF	●					●	●	●			
	61012	AC Melatonin Liposome SF	●				●	●	●				●
	60184	AC Retinol Liposome OS	●					●	●				
Enzymes	20440PF	ACB Modified Pomegranate Enzyme PF	●	●		●	●	●	●		●		
	20496	ACB Modified Pumpkin Enzyme PF	●	●	●	●	●	*	●		●		
	16647PF	ACB Modified Papaya Enzyme PF	●	●				*	●		●		
	10268PF	ABS Pap-Ango Enzyme PF	●	●		●		●	●		●		
	15048	ACB Cranberry Enzyme PF	●	●				●	●		●		
	20395PFN	AC Sebum Control Enzyme PF	●	●				●			●		
	20355	ACB Ox-Red SOD	●				●	●					●
Functional Actives	10414	ABS Acai Sterols EFA	●	●	●	●	●	*		●			
	20742	AcquaSeal® Coconut	●	●	●	●	●	●		●			
	10257	ABS Amaranthus Squalane	●		●			●		●			
	16558G	AC Vegetable Ceramides G	●					●		●			
	20606PF	AC Phytogel PF	●					*		●			
	10350	ABS Rice Lipids Plus	●		●	●		●		●			
	20612PF	AC Foaming Rice PF	●	●			●	*					
	20458PF	AC DermaPeptide Warming PF	●			●		*					
	20963	AC PolyJackharides	●	●		●		*		●			
	10405PF	ABS Ginger Mint Extract Cooling PF	●		●	●		●					
	22007	AC Powdered Rose Quartz	●					●					
	22015	AC Sapphire Powder	●					●					
	Proteins	16564	AC Phytocoll PF	●			●	●	●		●		
16810		ACB Pisum Sativum Peptide		●	●	●		*	●	●			●
16916		Mycofuse™ Protect		●				●	●				
20653SFV		AC Vegan Yogurt Hydrolysate SF	●	●		●	●	●				●	
20829		ProCutiGen® Bond		●	●	●		●	●	●			
20830		ProCutiGen® Vegan Thermal Shield		●	●			●		●			
20650PFV		AC Vegan Rice Curl Complex PF		●			●	*	●	●			
16932		ACB Rice Water SF		●				●		●			
20624PF		AC Plant Keratin PF		●	●	●		●		●			
20037		ACB Quinoa Protein		●	●			*		●			
16925		PhytoCycle® Orange		●	●	●	●	●		●			
20964		AC Vegan Keratin OS		●		●		●		●			



TECHNOLOGY PLATFORMS



7

Bioferments

Using yeast and bacteria to ferment plant biomass allows the production of new and unique natural products.



10

Botanical Extracts

Simple extractions to proprietary processes in a variety of solvents produced preservative-free.



13

Complex Actives

Characterized activity and targeted action for specific cosmetic claims.



16

Delivery Systems

State-of-the-art encapsulation technologies for optimum bioavailability and maximum effectiveness.



18

Enzymes

Enzyme and chaperone protein complex extracted together for enhanced stability and performance.



20

Functional Actives

Aesthetic modifiers with innovative cosmetic benefits.



23

Proteins

Soluble proteins and hydrolysates for film-forming and moisturisation. Peptides and amino acids for targeted activity and enhanced cellular functions.

Bioferments

Secondary
Metabolites

Bioavailability

Functionality

Using microorganisms, such as yeast and bacteria, to ferment plant biomass allows us to produce new and unique natural products.

Active Concepts has embraced this technology across our Bioferments and other technology platforms. By initiating fermentation we can increase various cosmetic benefits, found in natural plant extracts, such as an improved bioactive delivery, oxygen uptake, moisturisation, and reduction in skin irritation.

Although fermentation is not a new technology, long being used in both the food and pharmaceutical industries, we continue to evolve with the process to give natural and efficacious solutions for personal care.



12000 ACB Bio-Water Bamboo

Lactobacillus/Arundinaria Gigantea Ferment Filtrate & Leuconostoc/Radish Root Ferment Filtrate

A fermentation of silica rich bamboo shoots with Lactobacillus lactis under special conditions. This process forms a bio-silicate with the silica from the plants matrix. Enhance epidermal slip and formulation aesthetics while promoting moisturisation for improved skin, scalp and hair health.

BENEFITS - Conditioning, Moisturising

USE LEVEL - 1 - 10%



20339PF ACB Bio-Chelate 5 PF

Aqua & Saccharomyces/Zinc Ferment & Saccharomyces/Copper Ferment & Saccharomyces/Magnesium Ferment & Saccharomyces/Iron Ferment & Saccharomyces/Silicon Ferment & Leuconostoc/Radish Root Ferment Filtrate

A blend of essential minerals (zinc, iron, silicon, copper, magnesium) fermented with Saccharomyces cerevisiae to enhance the active bioavailability. These minerals work as co-factors in many enzymatic reactions, such as protein synthesis and cellular metabolism, enhancing skin barrier function.

BENEFITS - Skin & Hair Care, Conditioning, Nourishing

USE LEVEL - 0,5 - 5%

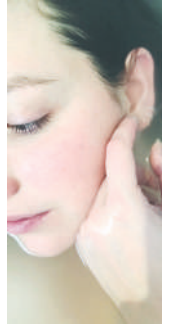


20219PF **AC Dermal Respiratory Factor Advanced PF**
 Aqua & Saccharomyces Lysate Extract & Lactobacillus Ferment

A global metabolic stimulant. Live yeast cell derivatives (LYCD) are produced by exposing yeast cells to UV radiation. These synergistically active compounds help to stimulate cellular metabolism, promoting an increase in cellular energy and collagen synthesis, whilst minimising skin irritation.

BENEFITS - Cellular Respiration & Metabolism increase, Collagen & Elastin Synthesis, Soothing

USE LEVEL - 0,5 - 1%



20224PF **ACB Yogurt Dermal Respiratory Factor PF**
 Lactobacillus Ferment Lysate Filtrate & Leuconostoc/Radish Root Ferment Filtrate & Populus Tremuloides Bark Extract

Created by stressing probiotic Lactobacillus bulgaricus cells with UV. As a stress response, the cells secrete reparative heat shock proteins. The proteins are then isolated using a series of filtration techniques. Benefits include an increase in oxygen uptake for more efficient cellular metabolism.

BENEFITS - Improves Cellular Respiration, Stimulates Collagen Production, Soothing

USE LEVEL - 2 - 5%



16618 **Probaillus Revive**
 Lactobacillus Ferment Lysate & Leuconostoc/Radish Root Ferment Filtrate

Created by culturing probiotic Lactobacillus bulgaricus cells in a unique media supplemented with soy and chicory derived prebiotics. These conditions encourage the production of synergistically active compounds with the ability to moisturise, enhance cellular renewal and promote collagen synthesis.

BENEFITS - Anti-Aging, Enhanced Cellular Renewal, Moisturising

USE LEVEL - 1 - 10%



20228 **ACB Agave HSP**
 Saccharomyces/Agave Americana Leaf Ferment Filtrate & Leuconostoc/Radish Root Ferment Filtrate

A fermentation of agave with Saccharomyces cerevisiae under special conditions. In response to environmental stress, agave has evolved a defence strategy of secondary metabolites and heat shock proteins. These protective benefits translate to a soothing active, calming redness and promoting repair.

BENEFITS - Calming, Increase Collagen Synthesis, Moisturising, Soothing, Repairing

USE LEVEL - 1 - 10%



10950 **AC Saccharomyces Ferment**
 Saccharomyces Ferment & Leuconostoc/Radish Root Ferment Filtrate

Metabolites released by yeast ferments are known to be rich in enzymes such as hydrolases, reductivases, and oxidases that can transform odour compounds into larger compounds. With a higher MW these compounds no longer evaporate easily off the skin, providing a mechanism of natural odour reduction.

BENEFITS - Deodorants & Hygiene Products, Skin Conditioning

USE LEVEL - 1 - 5%



12006 AC OleaShield
Lactobacillus & Olea Europaea (Olive) Fruit Water & Lactobacillus Ferment

Biofermented and derived from Italian upcycled olive waste water, AC OleaShield activates the autophagy detoxification process within the cells to maintain skin homeostasis and counteracts the age-related decline in skin cell function. Get the power of Mediterranean Olive into your skin!

BENEFITS - Detoxification, Pro-Aging, Antioxidant, Reparation

USE LEVEL - 1 - 10%



20364G ACB Lemon Peel Extract G
Glycerin & Aqua & Lactobacillus/Lemon Peel Ferment Extract & Leuconostoc/Radish Root Ferment Filtrate

Lemon peel extracts are known to have anti-tyrosinase activity, working as a natural and effective alternative to hydroquinone for inhibiting tyrosinase production. Traditionally sourced for vitamin C content and natural acids, this fermented lemon peel extract can help to balance and even skin tone.

BENEFITS - Antioxidant, Balances skin tone

USE LEVEL - 0,5 - 2%



20349PF ACB Olive Leaf Extract PF
Lactobacillus/Olive Leaf Ferment Extract

A fermentation of olive leaves with Lactobacillus lactis under special conditions. This process isolates naturally occurring phenolic compounds such as oleuropein, flavonoids and tannins. With unique antioxidant and antimicrobial properties, this ferment extract can help protect the skin and scalp.

BENEFITS - Antimicrobial, Antioxidant

USE LEVEL - 1 - 5%

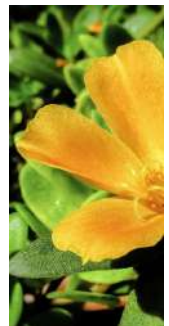


20021SF ACB Purslane Bioferment SF
Lactobacillus/Portulaca Oleracea Ferment Extract & Lactobacillus Ferment

A fermentation of purslane with Lactobacillus bulgaricus. This edible succulent is rich in glutathione (GSH), a potent antioxidant peptide capable of scavenging free radicals, preventing damage to cell components. GSH also regenerates and stabilises vitamin C. **Standardised for GSH & GSR content**

BENEFITS - Antioxidant, Stabilizes Vitamin C

USE LEVEL - 1 - 10%



20351PF ACB Wasabi Extract PF
Lactobacillus/Wasabi Japonica Root Ferment Extract

Wasabi root is rich in phytochemicals such as superoxide dismutase and peroxidase. These can scavenge superoxide and peroxide radicals, principle contributing factors in the ageing process. With unique antioxidant and antimicrobial properties, this ferment extract can help protect the skin and scalp.

BENEFITS - Antimicrobial, Antioxidant

USE LEVEL - 1 - 5%



Botanical Extracts

Natural
Power

Specific
Attributes

Phytochemicals

Cosmetic marketing relies heavily on flowers, fruits, herbs, and vegetables for brand image and label claim. By harnessing the power of botanicals, unique concepts of traditional medicinal use and history can be created. Plants contain unique cellular components or machinery that influence their survival and functionality. Some plants utilize secondary metabolites, a complex of enzymes and stress response elements that work synergistically to prevent significant damage to the plant.

From a simple extraction to a propriety process, Botanical Extracts can complement the activity of a wide variety of personal care products and add value to a formulation with a range of efficacious activity. At Active Concepts we also take into consideration the importance of provenance, sourcing and sustainability.



10568PF ABS Coconut Water PF

Cocos Nucifera (Coconut) Water & Leuconostoc/Radish Root Ferment Filtrate

Tapped from the coconut at a young age, coconut water contains easily digestible carbohydrates in the form of sugars and electrolytes. These can help balance fluid levels within cells. Coconut water is also rich in constituents of cytokinins, which regulate cellular health and hydration.

BENEFITS - Conditioning, Hydrating, Moisturising

USE LEVEL - 1 - 10%



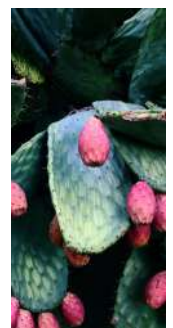
11553 ABS Cactus Water SF

Opuntia Ficus-Indica Stem Water & Lactobacillus Ferment

An isotonic plant water capturing the natural hydration mechanism of the prickly pear cactus. Being rich in electrolytes, this plant water can help to balance and tone the skin, providing a hydrating base for refreshing micellar waters, skin essences and toners.

BENEFITS - Conditioning for Hair & Skin, Moisturising

USE LEVEL - 1 - 10%



16905 BiEau® Actif Brown Algae
Laminaria Japonica Extract & Leuconostoc/Radish Root Ferment Filtrate

A vital botanical essence capable of providing antioxidant potential while minimizing fine lines and wrinkles. Capitalise on the presence of fucoidan from brown algae, to promote revitalized, younger-looking skin.

BENEFITS - Isotonic solution, Antioxidant, Reduces Wrinkles

USE LEVEL - 1 - 10%



20222AB ACAIg-MoistEAUAB
Aqua & Chondrus Crispus Extract & Populus Tremuloides Bark Extract

Chondrus crispus, also known as Irish moss, is a species of red algae rich in the polysaccharide carrageenan. This viscous algae extract is electrolyte tolerant helping to stabilise salt thickened surfactant systems. It also creates a supple and conditioning film on the skin and hair.

BENEFITS - Hair Gloss, Aesthetic Enhancement, Moisturising, Thickening

USE LEVEL - 3 - 5%



10229 ABS White Willow Bark Extract Powder
Salix Alba (Willow) Bark Extract

Traditionally used as a remedy for anti-inflammatory and analgesic properties, willow bark extracts provide a rich source of salicylates, a natural alternative to synthetic salicylic acid. An effective exfoliant and antimicrobial active. **Standardised for 53.0 - 65.0% natural salicylate content.**

BENEFITS - Antimicrobial, Exfoliating, Problem Skin, Soothing

USE LEVEL - 2 - 5%



20343 LNZ ACB Fruit Mix
Aqua & Vaccinium Myrtillus Fruit Extract & Saccharum Officinarum (Sugar Cane) Extract & Citrus Aurantium Dulcis (Orange) Fruit Extract & Citrus Limon (Lemon) Fruit Extract & Acer Saccharinum (Sugar Maple) Extract

Standardised for lactic acid (28-32%), glycolic acid (12-17%), citric acid (2-6%), malic acid (max. 1%), and tartaric acid (max. 1%) this complex of fruit extracts help to promote cellular renewal. Enhanced exfoliation leads to improved cellular proliferation and a brighter, more even complexion.

BENEFITS - Anti-Aging, Enhance Cellular Renewal, Exfoliating, Problem Skin

USE LEVEL - 1 - 10%



11415 ABS Matcha Tea Extract PF
Aqua & Camellia Sinensis (Matcha Tea) Leaf Extract & Leuconostoc/Radish Root Ferment Filtrate

Matcha tea, a specially grown and processed form of green tea, is an antioxidant powerhouse used for centuries in the Japanese tea ceremony and as an aid to meditation. Rich in L-theanine, caffeine and catechins, matcha tea is considered to give a calm energy while providing antioxidant protection.

BENEFITS - Antioxidant, Conditioning

USE LEVEL - 1 - 10%



20359PF **ACB Oat Extract Beta PF**

Aqua & Lactobacillus/Oat Ferment Extract Filtrate & Leuconostoc/Radish Root Ferment Filtrate

Derived from oat bran, β -Glucans are polysaccharides comprised of glucose linked by glycosidic bonds. β -Glucans function as bio-active modulators that can help reduce stress by interacting with Langerhans cells and keratinocytes to condition and calm.

BENEFITS - Conditioning, Nourishing

USE LEVEL - 1 - 10%



10550 **ABS Moringa Pterygosperma Seed Extract G**

Glycerin & Moringa Oleifera Seed Extract & Leuconostoc/ Radish Root Ferment Filtrate

Moringa, the tree of life, is used in Ayurveda. The seeds are rich in vitamins and minerals, such as vitamin C, beta-carotene, iron, and potassium, which contribute to antioxidant and therapeutic benefits. Combined with an anti-pollution activity this natural extract provides a line of skin defence.

BENEFITS - Conditioning, Improved Barrier Function, Pollution Protection

USE LEVEL - 1 - 10%



11907 **AC Watercress Extract SF**

Aqua & Nasturtium Officinale Extract & Lactobacillus Ferment

This natural source of Vitamin C from a superfood will aid in neutralizing harmful free radicals to keep fine lines and wrinkles at bay, and can help with problematic skin conditions caused by inflammation, such as acne and psoriasis. **Standardised for 0.5 - 2.0% maximum Vitamin C content.**

BENEFITS - Anti-Aging, Hydrating, Moisturising, Soothing

USE LEVEL - 1 - 10%



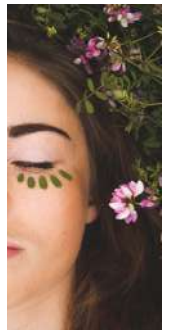
20447 **AC Party Face Pom**

Aqua & Punica Granatum Extract & Citrus Aurantium Dulcis (Orange) Flower Extract & Leuconostoc/Radish Root Ferment Filtrate

A unique super fruit extract designed to give immediate skin tightening benefits whilst priming the skin with nutrients for long-term conditioning and health. This is achieved by combining high molecular weight carbohydrates from pomegranates with low molecular weight peptides from orange blossom.

BENEFITS - Anti-Aging, Lifting, Tightening

USE LEVEL - 2 - 5%



22064 **AC Water Kefir PHA**

Aqua & Opuntia Ficus-Indica Fruit Extract & Lactobacillus Ferment

As a poly hydroxyl acid, AC Water Kefir PHA enhances natural skin beauty and promotes collagen synthesis for a revitalized aesthetic. Reveal the beauty lying underneath and buff away tired skin with a gentle approach. **Standardised for 18.0 - 24.0% gluconic acid content.**

BENEFITS - Promotes Collagen Synthesis, Increases Cellular Renewal, Vegan PHA

USE LEVEL - 1 - 10%



TECHNOLOGY
PLATFORM

Complex Actives

Unique Stories

Targeted Activity

Sustainability

Industry demands urge brands to find the latest innovative ingredients. By optimizing methods of manufacture and combining various technologies, Active Concepts continues to create innovative and sustainable Complex Actives offering functionality, efficacy, and unique stories to maximize brand potential! With a targeted action for specific cosmetic claims such as cellular renewal, antioxidant and pollution protection, all of these materials can be used across an array of different personal care products.

With a well characterized activity supported by *in-vitro/in-vivo* efficacy data these claims can be substantiated while simultaneously allowing for a unique brand identity and story. From plant-derived to stem cell ingredients, we offer a variety of raw materials that utilize cutting edge technologies to keep our customers ahead of the latest innovations!

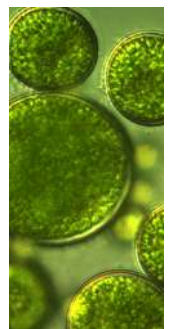
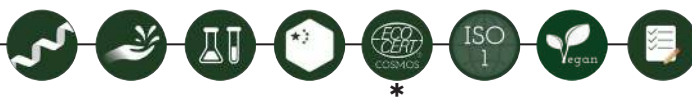


20852 **AcquoSeal® Algae** Chlamydomonas Reinhardtii Extract

Derived from a sustainable photosynthesizing green algae, a proprietary technology is used to isolate and extract bioactive complex lipids from the algae chloroplasts. These lipids help to provide cellular renewal, hydration, and proliferation while defending against the signs of inflammaging.

BENEFITS - Anti-Inflammatory, Cellular Renewal, Cellular Proliferation, Hydrating

USE LEVEL - 1 - 10%



20757PF **ACCytopure PF** Crypthecodinium Cohnii Extract & Leuconostoc/Radish Root Ferment Filtrate

A novel approach to pro-ageing and optimised skin health captured by dinoflagellate algae. Derived from sulphur biology and via a mechanism of up-regulating glutathione antioxidant production. This active can protect and revitalize the skin against cellular and external environmental stressors.

BENEFITS - Cellular Detoxification, Pollution Protection, Wound Healing

USE LEVEL - 1 - 5%



20024 **ACB Wakame Bioferment Advanced**

Undaria Pinnatifida Cell Culture Extract & Leuconostoc/Radish Root Ferment Filtrate

Derived by stressing cultured wakame cells, this active reduces the amount of oxidative species created during cell respiration, allowing the mitochondria to work with optimal efficiency. This 'detoxifying' seaweed active can protect the skin by targeting intrinsic cell pollution and damage.

BENEFITS - Increase in Cellular Respiration, Cellular Metabolism & Collagen Synthesis

USE LEVEL - 0,5 - 2%



16587 **Phyto-Biotics Acai®**

Euterpe Oleracea Fruit Extract & Lactobacillus Ferment

Ferulic acid is a component of plant cell walls, protecting from pathogens and UV exposure. These properties of ferulic acid, produced by acai stem cell propagation, can provide potent antioxidant activity and help to extend vitamin C photostability. **Standardised for 4.0 - 5.0% ferulic acid content.**

BENEFITS - Anti-Aging, Antioxidant, Increase in Cellular Metabolism & ATP Synthesis, Soothing

USE LEVEL - 1 - 10%



12011 **AC AmaraSense**

Aqua & Glycyrrhiza Glabra (Licorice) Root Extract & Salix Alba (Willow) Bark Extract & Cynara Scolymus (Artichoke) Leaf Extract & Lactobacillus Ferment

Step into the sensory world of AC AmaraSense! Combining bitter substances (Licorice Root Extract, White Willow Bark Extract, and Artichoke Extract) to restore balance in your skin by boosting intracellular calcium levels, providing deep hydration and nourishing your complexion for a youthful radiance.

BENEFITS - Reparation, Pro-Aging, Moisturization, Anti-Dryness

USE LEVEL - 1 - 10%



16586 **Phytofuse Renew®**

Selaginella Lepidophylla Extract & Lactobacillus Ferment

Provide protective and reparative benefits associated with secondary metabolites produced by the 'desert rose' during stress. This natural complex carbohydrate system provides emollient benefits and forms a lubricious film, binding water and activating fibroblasts, to restore extracellular proteins.

BENEFITS - Aesthetic Enhancement, Moisturising, Protectant, Soothing

USE LEVEL - 1 - 10%



16882 **Phytofuse Rejuvenate®**

Salvia Hispanica Seed Extract & Lactobacillus Ferment

Isolated exopolysaccharides extracted from chia seeds are demonstrated to aid in cell proliferation, wound healing and anti-inflammation. These mechanisms of a carbohydrate chemistry scaffold promote skin repair and rejuvenation. This functional active film also improves sensory slip and cushion.

BENEFITS - Anti-Inflammatory, Antioxidant, Film-Forming, Wound Healing

USE LEVEL - 1 - 10%



16634 AC Griffonia Lysate Advanced

Griffonia Simplicifolia Seed Extract & Leuconostoc/Radish Root Ferment Filtrate

Griffonia seeds are naturally rich in 5-hydroxytryptophan (5-HTP) a neurotransmitter that has been shown to protect cells from UV-induced apoptosis. 5-HTP is also a precursor for serotonin, often called the happy hormone, as it promotes feelings of wellbeing. **Standardised for 1% 5-HTP content.**

BENEFITS - Anti-Aging, Lifting, Tightening, UV Protection

USE LEVEL - 1 - 10%



20342PF ACB Yerba Santa Glycoprotein PF

Lactobacillus / Eriodictyon Californicum Ferment Extract & Leuconostoc/Radish Root Ferment Filtrate

A fermentation of yerba santa leaves with Lactobacillus lactis under special conditions. These leaves are tough and resinous helping the plant to conserve water. Isolation of its natural complex bio-molecules, such as glycoproteins, can promote skin and scalp moisturisation via hydrogen bonding.

BENEFITS - Antioxidant, Moisturising, Enhanced Epidermal Slip, Increase Cellular Viability

USE LEVEL - 1 - 10%



16671 Revital-Eyes

Aqua & Lactobacillus Ferment Lysate & Camellia Sinensis Leaf Extract & Punica Granatum Extract & Lactobacillus Ferment & Caffeine

A unique complex derived from probiotic Lactobacillus bulgaricus, green tea, pomegranate and caffeine that helps reduce signs of ageing around the sensitive eye area. The appearance of fine lines, puffiness and dark circles are minimised while the skin is primed for maintenance of long-term health.

BENEFITS - Anti-Aging, Anti-wrinkle, Lifting, Tightening, Reducing Dark Circles & Under-Eye Bags

USE LEVEL - 1 - 10%



16617 ProRevive BB Complex

Lactobacillus/Salix Alba Bark Ferment Filtrate

An all-inclusive active designed to improve over-all skin health. Derived from a fermentation of white willow with Lactobacillus bulgaricus, this diverse complex delivers skin moisturisation, antioxidant and antimicrobial protection and an improvement in cellular function to boost collagen synthesis.

BENEFITS - Anti-Aging, Cellular Renewal, Collagen Synthesis, Moisturising, Problem Skin, Protectant

USE LEVEL - 1 - 10%



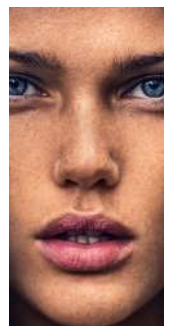
21005PF AC Biopolymer Chia PF

Coconut Acid & Salvia Hispanica Seed Extract & Leuconostoc/Radish Root Ferment Filtrate

A modified chia protein with a lipid moiety derived from coconut fatty acids that disrupts the surface tension of sebum on the skin by binding to excess oils. Dispersing the sebum droplets, helps to control oily prone skin, giving a mattifying effect, without aggressive drying.

BENEFITS - Film Former, Problem Skin, Sebum Control

USE LEVEL - 0,5 - 5%



Delivery Systems

Liposomes

Enhanced Efficacy

Protection

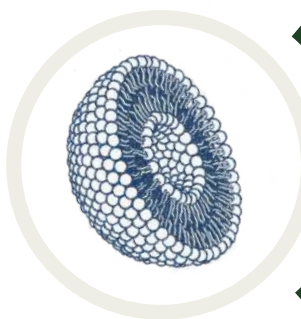
Maximize skin penetration, improve response time, and target release utilizing encapsulation technology. Delivery systems also stabilize sensitive actives, to protect the integrity of the encapsulate or allow the formulator to incorporate an active with poor solubility in the desired carrier. Liposomes can be used in the delivery of various cosmetic actives, vitamins, and minerals for an array of advantages such as antioxidant benefits, conditioning, and antimicrobial purposes.

These microscopic vesicles may attach and fuse to cellular membranes, releasing their contents into target cells. Being very useful and able to simultaneously transport both oil and water soluble actives within one vesicle; the hydrophilic molecules are encapsulated within the aqueous centre of the biomolecule, whereas the hydrophobic elements are incorporated into the lipid bilayer.



Active Concepts produces a variety of unilamellar vesicles employing a proprietary composition of phospholipids utilizing high shear techniques. These specifically created vesicles have a greater Zeta Potential than typical liposomes. Zeta Potential is the measure of the electrostatic or charge repulsion between particles. The magnitude of the Zeta Potential is indicative of the colloidal stability, a larger Zeta Potential yields higher degrees of stability. In an effort to bring this stable delivery system to our customers, Active Concepts offers many standard liposomes.

Liposome



- Effective Transport across a barrier
- Allows for targeted product development
- Can increase product stability and efficacy

Free Material



- Unable to penetrate across a barrier
- Non-specific product efficacy
- Decreased stability in-vivo, less effective

61005PF **ACHemp Oil Liposome PF**
EUR Aqua & Phospholipids & Leuconostoc/Radish Root Ferment Filtrate & Cannabis Sativa Seed Extract

Capitalise on the potent anti-inflammatory benefits associated with hemp oil and CBD while using encapsulation technology to enhance activity and stability. Inhibition of Interleukin-6 activity may help to alleviate the chronic inflammatory process, which is linked to the process of skin ageing.

BENEFITS - Anti-Inflammatory, Capitalizes on CBD Oil Trend, Liposome Technology

USE LEVEL - 1 - 10%



60050 **ACMVS Lips**
 Glycine Soja (Soybean) Seed Extract & Glycyrrhiza Glabra (Licorice) Leaf Extract & Phospholipids

A self-assembling, low MW system that enables easy incorporation into an anhydrous product. When applied the phospholipids naturally assemble into a multi-vesicular system that swells to give the appearance of increased lip volume. Imparts hydration and plumping benefits.

BENEFITS - Hydrating, Lip Plumping, Soothing

USE LEVEL - 2 - 15%



60147PF **ACHYA Liposome PF**
 Aqua & Phospholipids & Hyaluronic Acid & Leuconostoc/Radish Root Ferment Filtrate

Liposomes can enhance penetration of actives in the skin, with little ability to protect water-activated actives. This system has a solid core that is porous, allowing it to be loaded with high MW hyaluronic acid. This moisture activated, time-released system deeply moisturises and plumps the skin.

BENEFITS - Anti-Aging, Moisturisation

USE LEVEL - 1 - 10%



61012 **AC Melatonin Liposome SF**
 Aqua & Phospholipids & Melatonin & Lactobacillus Ferment

Melatonin, a naturally-occurring hormone, controls the sleep-wake cycle and plays a vital role in skin regeneration and antioxidant production. This natural restorative powerhouse can be used to recharge skin's radiance and reinforce the skin's capacity for repair, renewal, and revitalization.

BENEFITS - Antioxidant, Inflammaging Defense, Wrinkle Reduction

USE LEVEL - 1 - 10%

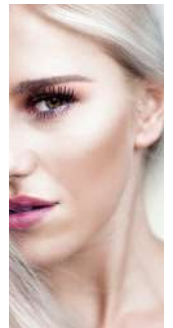
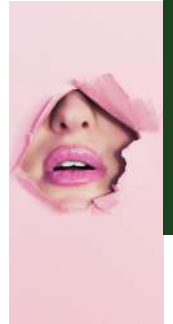


60184 **AC Retinol Liposome OS**
 Caprylic/Capric Triglyceride & Phospholipids & Retinol

AC Retinol Liposome OS is an oil soluble liposome containing 10% retinol. Encapsulation helps to improve not only delivery of the retinol, but its stability as well. This liposome allows for easy incorporation of retinol into anhydrous or emulsion systems to help decrease the extrinsic signs of aging.

BENEFITS - Anti-Aging, Enhanced Delivery, Increased Cellular Turnover

USE LEVEL - 1 - 10%



Enzymes

Cellular
Renewal

Exfoliation

Chaperone
Proteins

Enzymes are biological catalysts comprised primarily of protein. They are the engines that make possible the varied and subtle chemistry of living organisms. Enzymes also offer exciting opportunities within cosmetics. One approach offered by Active Concepts is the direct incorporation of enzymes such as Proteases and another is the use of Superoxide Dismutase. Proteases are the enzymes that degrade proteins.

Traditionally in personal care plant based proteases, such as Papain from Papaya or Bromelain from Pineapple, have been used. In cosmetics these enzymes function to breakdown keratin, softening skin and smoothing hair. The enzyme Superoxide Dismutase works to neutralise reactive oxygen species (ROS) such as the Superoxide Anion. This enzyme is often used in personal care to provide protection and reduce irritation.

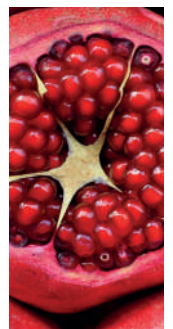


20440PF **ACB Modified Pomegranate Enzyme PF** Lactobacillus/Punica Granatum Fruit Ferment Extract & Leuconostoc/Radish Root Ferment Filtrate

A fermentation of pomegranate with Lactobacillus lactis. Through selective filtration techniques plant proteolytic fractions are then isolated. Enhance cellular renewal via gentle enzyme exfoliation for a smooth, even skin texture and help clarify the scalp from product build-up, pollution and dirt.

BENEFITS - Enhanced Cellular Renewal, Exfoliating

USE LEVEL - 1 - 10%



20496 **ACB Modified Pumpkin Enzyme PF** Lactobacillus/Pumpkin Fruit Ferment Filtrate & Leuconostoc/Radish Root Ferment Filtrate

A fermentation of pumpkin with Lactobacillus lactis. Through selective filtration techniques plant proteolytic fractions are then isolated. Enhance cellular renewal via gentle enzyme exfoliation, removing trapped bacteria and helping clarify the skin and scalp from product build-up, pollution and dirt.

BENEFITS - Enhanced Cellular Renewal, Exfoliating

USE LEVEL - 1 - 10%

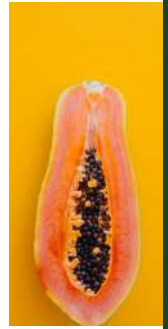


16647PF ACB Modified Papaya Enzyme PF
Lactobacillus/Papaya Fruit Ferment Extract & Leuconostoc/Radish Root Ferment Filtrate

A fermentation of papaya with Lactobacillus lactis. Through selective filtration techniques plant proteolytic fractions are then isolated. Enhance cellular renewal via gentle enzyme exfoliation, removing trapped bacteria, while working to smooth and even the skin texture for a brighter complexion.

BENEFITS - Enhanced Cellular Renewal, Exfoliating

USE LEVEL - 1 - 10%



10268PF ABS Pap-Ango Enzyme PF
Aqua & Carica Papaya (Papaya) Fruit Extract & Mangifera Indica (Mango) Fruit Extract & Leuconostoc/Radish Root Ferment Filtrate

An effective exfoliator derived from papaya and mango. Enzymes, such as papain from papaya, help digest proteins that have accumulated on the skin's surface serving to release trapped bacteria, which can cause problem skin. Enhance cellular renewal through exfoliation for a smooth, even skin texture.

BENEFITS - Enhanced Cellular Renewal, Exfoliating

USE LEVEL - 1 - 10%



Enzymes

15048 ACB Cranberry Enzyme PF
Aqua & Vaccinium Macrocarpon (Cranberry) Fruit Extract & Leuconostoc/Radish Root Ferment Filtrate

A gentle exfoliator derived from cranberry proteolytic fractions. Enzymes digest proteins that have accumulated on the skin's surface serving to release trapped bacteria, which can cause congested problem skin. Enhance cellular renewal through exfoliation for an improved skin texture and radiance.

BENEFITS - Enhanced Cellular Renewal, Exfoliating

USE LEVEL - 0,5 - 5%



20395 AC Sebum Control Enzyme PF
PFN Butylene Glycol & Aqua & Spiraea Ulmaria Extract & Lactobacillus Ferment

Derived from the Gallotannins and Ellagitannins of meadowsweet. These natural astringents are able to reduce the activity of the sebaceous glands. Helps prevent problem skin by limiting and regulating sebum production in a base of naturally derived butylene glycol.

BENEFITS - Control Oil & Dryness, Problem Skin

USE LEVEL - 2 - 5%



20355 ACBOx-Red SOD
Superoxide Dismutase

Protect from oxidative stress with superoxide dismutase (SOD), which neutralises the superoxide anion. ROS can damage genetic information, oxidise proteins, or initiate lipid peroxidation. Application of SOD can help to reduce the irritation caused by such stress, calming and soothing the skin.

BENEFITS - Antioxidant, Anti-irritant, Color Protectant

USE LEVEL - 1 - 2%



Functional Actives

Multifunctional
Benefits

Botanical Solutions

Aesthetic
Enhancement

Using biotechnology Active Concepts are working to create botanical replacements to animal or petrochemical derived cosmetic raw materials such as gelatine, lanolin and petrolatum jelly. These natural alternatives can bring a texture, viscosity, slip or stabilising function to a formulation, enhancing aesthetic appeal and value. Simultaneously these functional materials can also enhance activity on the skin or hair providing multifunctional benefits and claims.

Sensory ingredients are enticing functional actives that provide cooling and warming sensations for consumers to experience the integrity of a product. Silky, soft, velvety, and even physically exfoliating ingredients can provide an engaging experience and create a foundation for strong brand differentiation.



10414 ABSAcai Sterols EFA

Euterpe Oleracea Sterols & Linoleic Acid & Oleic Acid & Linolenic Acid

Derived from a lipid fraction of acai, this waxy balm can be used as a natural replacement for synthetic and animal-derived materials, such as petrolatum and lanolin. Ideal for increasing hydration and skin barrier function, it can be used to enhance pigment dispersion and shine in colour cosmetics.

BENEFITS - Barrier Repair, Hydrating, Moisturising

USE LEVEL - 1 - 10%



20742 AcquaSeal® Coconut

Cocos Nucifera (Coconut) Fruit Extract & Tocopherol

Derived from selectively fractionated coconut lipids this multifunctional balm provides a silky texture, while sealing in moisture and delivering critical macronutrients. Improve barrier function and protection as well as long-term hydration, while enhancing the sensorial application to the skin.

BENEFITS - Enhanced Aesthetic, Film-Former, Improved Barrier Function, Moisturising, Re-Lipidising

USE LEVEL - 0,5 - 5%



10257 **ABS** *Amaranthus Squalane*
Squalane

A sustainable alternative to animal or olive derived squalane. This natural emollient imparts a suppleness to the skin with a light, non-greasy and easily absorbed aesthetic. Intended to replenish the squalane present in our own skin barrier lipids, helping to prevent dryness and irritation.

BENEFITS - Conditioning, Moisturising

USE LEVEL - 1 - 10%

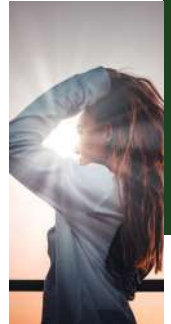


16558G **AC** *Vegetable Ceramides G*
Glycerin & Glycosphingolipids & Leuconostoc/Radish Root Ferment Filtrate

Ceramides present within cellular membranes provide structural support and form a major constituent of the lipid bilayer. Glycosphingolipids, derived from rice, present a natural alternative to synthetic ceramides. Reinforce the protective skin barrier and hair shaft, moisturise and condition.

BENEFITS - Nourishing, Conditioning

USE LEVEL - 1 - 10%



20606PF **AC** *Phytogel PF*
Hydrolyzed Fucus Vesiculosus Protein & Leuconostoc/Radish Root Ferment Filtrate

A botanical replacement mimicking animal gelatin by utilising fractions of Fucus vesiculosus seaweed. Fucus vesiculosus cell walls are rich in polyguluronate subunits. The arrangement of these units allow for gelatin-like properties and provide a powdery yet soft flexible film aesthetic on the skin.

BENEFITS - Aesthetic Enhancement, Film Former, Moisturising, Viscosity Modifier

USE LEVEL - 1 - 5%



10250 **ABS** *Rice Lipids Plus*
Oryza Sativa (Rice) Lipids

A lipid fraction from rice, which is naturally rich in vitamin E, a potent antioxidant. This lightweight low viscosity lipid system improves spread-ability, binds pigments and promotes shine. A hydrating emollient that replenishes the skin lipid barrier. **Standardized for 0.8 - 1.2% vitamin E content.**

BENEFITS - Moisturising, Barrier Function, Binding Agent

USE LEVEL - 1 - 5%



20612PF **AC** *Foaming Rice PF*
Aqua & Sodium Cocoyl Hydrolyzed Rice Protein & Leuconostoc/Radish Root Ferment Filtrate

A reaction product of hydrolyzed rice protein with coconut fatty acid condensate moieties provides a sulphate free secondary surfactant system. Gentle enough for use in sensitive skin and scalp care formulations, providing mild cleansing and conditioning while also promoting a more stable rich foam.

BENEFITS - Enhanced & Stabilised Foam, Conditioning

USE LEVEL - 1 - 10%



20458PF **AC DermaPeptide Warming PF**

Lactobacillus/Capsicum Frutescens Fruit Ferment Extract & Leuconostoc/Radish Root Ferment Filtrate

A sensorial active derived from a fermentation of chilli (*Capsicum frutescens*) with *Lactobacillus*. This combines the anti-irritant and soothing benefits of probiotic *Lactobacillus* with the known properties of *Capsicum*, such as an increase in microcirculation and a perceivable warming sensation.

BENEFITS - Increased Circulation, Therapeutic, Warming

USE LEVEL - 0,5 - 15%



20963 **AC PolyJackharides**

Aqua & Artocarpus Heterophyllus Fruit Extract & Lactobacillus Ferment

Comprised of jackfruit polysaccharides extracted from upcycled food industry waste. This is a vegan functional active is capable of providing moisturization to the skin, as well as hydration and anti-frizz benefits to the hair, while capitalizing on sustainability and traceability.

BENEFITS - Moisturizing, Anti-Frizz, Skin & Hair Care

USE LEVEL - 1 - 10%



10405PF **ABS Ginger Mint Extract Cooling PF**

Aqua & Zingiber Officinale (Ginger) Root Extract & Mentha Piperita (Peppermint) Leaf Extract & Leuconostoc/Radish Root Ferment Filtrate

A blend of ginger and peppermint which combines two mechanisms of action to give an invigorating and cooling effect on the skin and scalp. Menthol chemically triggers TRPM8 skin receptors, which directly stimulates nerve endings, while ginger volatile phenolic compounds evaporate from the skin.

BENEFITS - Sensory, Cooling, Refreshing

USE LEVEL - 1 - 10%



22007 **AC Powdered Rose Quartz**

Quartz

Rose quartz has long been used for beautifying in many cultures. This precious gem is associated with all things feminine and is a symbol of love, trust and harmony. Capture the passionate energy of precious rose quartz with this micronised powder. Work to soften, condition and illuminate the skin.

BENEFITS - Energizing, Gem Stone Therapy, Holistic Care

USE LEVEL - 1 - 5%



22015 **AC Sapphire Powder**

Sapphire Powder

Sapphires have long been revered for their healing properties and use in colour therapy. They are said to bring balance and equilibrium. Capture the vibrant energy of precious sapphire with this micronised powder. Work to buff, balance and illuminate the skin.

BENEFITS - Energizing, Gem Stone Therapy, Holistic Care

USE LEVEL - 1 - 5%



Functionality

Natural Hydrolysis

Vegan Alternatives

For decades, proteins have played a dominant role in the personal care industry and are still leading the industry forward. Peptides, enzymes, amino acids, and other proteinaceous materials continue to be used in nearly every aspect of personal care. Proteins are the building blocks of nature. They serve as the structural scaffolding in our cells, skin, hair and nails. Proteins are also essential building blocks in cosmetic formulations.

At Active Concepts we provide proteins for personal care in various forms: soluble proteins for film forming and moisturising, hydrolysates for conditioning and peptides or amino acids for targeted activity and enhanced cellular function. Utilising biotechnology we can also offer botanical alternatives to animal derived proteins and control the molecular weight and subsequent functionality of a material.



16564 AC Phytocol PF

Yeast Extract & Leuconostoc/Radish Root Ferment Filtrate

Mimic the film-forming aesthetic of mammalian collagen while delivering moisture to the skin and hair from a vegan source. This functional alternative to animal derived collagen is formed by lysing yeast cells and then isolating specific hydroxyproline-rich glycoproteins.

BENEFITS - Hydrating, Conditioning

USE LEVEL - 1 - 10%



16810 ACB Pisum Sativum Peptide

Pisum Sativum (Pea) Peptide & Leuconostoc/Radish Root Ferment Filtrate

Pea protein hydrolysis via fermentation with Lactobacillus bulgaricus promotes a multifunctional hair care active. Film-forming provides intense hydration whilst working to thicken and increase volume. Demonstrated antioxidant and pollution protection provides a shield against environmental stress.

BENEFITS - Anti-Aging, Antioxidant, Conditioning, Hydrating, Volumising

USE LEVEL - 1 - 10%

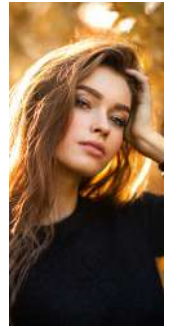


16916 **Mycofuse® Protect**
Aqua & Lentinus Edodes Mycelium Extract & Lactobacillus Ferment

Optimizes Lentinus Edodes mycelium polysaccharides to shield hair strands from thermal damage, while masking visible damage from chemical processes such as bleach. The adhesive properties of mycelium fuse to the hair strand and seal the cuticle, improving strength and elasticity.

BENEFITS - Smooth Hair, Hair Damage Protection, Hair Strengthening

USE LEVEL - 1 - 10%



20653 **ACVegan Yogurt Hydrolysate SFV**
Aqua & Cocos Nucifera (Coconut) Fruit Extract & Lactobacillus Ferment

A sustainably manufactured coconut yogurt created by fermenting coconut milk with the beneficial probiotic bacteria Lactobacillus bulgaricus. The coconut yogurt proteins are then hydrolyzed to give a vegan alternative active to moisturise, reduce redness and help calm and soothe the skin and scalp.

BENEFITS - Moisturising, Redness Reducing, Conditioning

USE LEVEL - 1- 10%



20829 **ProCutiGen® Bond**
Salvia Hispanica Seed Extract & Leuconostoc/Radish Root Ferment Filtrate

A lipopeptide derived from chia seeds utilised for hair strength and protection. Chia's rich source of protein can prime the hair cuticle with bivalent cationic lipopeptides that create a de novo cuticle across the hair shaft helping to prevent damage. **Targeted for chemically treated hair.**

BENEFITS - Hair Care, Hair Protection, Nourishing, Support

USE LEVEL - 1- 10%



20830 **ProCutiGen® Vegan Thermal Shield**
Saccharomyces Cerevisiae Extract & Leuconostoc/Radish Root Ferment Filtrate

A bivalent cationic lipopeptide derived from proteins expressed from yeast that mimic keratin like functions. This system self-assembles into a neo-cuticle on the hair shaft. The formation of this biomimetic cuticle offers protection from high temperature styling. **Targeted for heat treated hair.**

BENEFITS - Hair Care, Nourishing, Support, Thermal Protection

USE LEVEL - 1- 10%



20650 **ACVegan Rice Curl Complex PFV**
Aqua & Lactobacillus/Tomato Fruit Ferment Extract & Oryza & Sativa (Rice) Extract & Yeast Amino Acids & Leuconostoc/Radish Root Ferment Filtrate & Acyl Coenzyme A Desaturase

A unique complex of rice amino acids, stearoyl CoA-desaturase (SCD-1), tomato bioferment and yeast amino acids that enhances curl retention, conditions, hydrates, and protects curly hair. Stabilizing both the hydrogen and salt bonds to help strengthen the hair and manageable curls.

BENEFITS - Anti-Aging, Conditioning, Curl Retention

USE LEVEL - 1- 10%



16932 ACB Rice Water SF

Oryza Sativa (Rice) Seed Water & Saccharomyces Ferment & Lactobacillus Ferment

Intended to coat the hair in starch for repair and strengthening, rice water is rich in vitamins and amino acids. Active Concepts has taken this trend of DIY treatments at home one step further by fermenting the rice water to enhance its benefits of intense hydration and humidity protection.

BENEFITS - HAIR HYDRATION, HUMIDITY PROTECTION, AYURVEDIC TECHNOLOGY

USE LEVEL - 1 - 10%



20624PF AC Plant Keratin PF

Hydrolyzed Corn Protein & Hydrolyzed Wheat Protein & Hydrolyzed Soy Protein & Leuconostoc/Radish Root Ferment Filtrate

A natural complex of hydrolyzed proteins derived from corn, soybeans and wheat with a molecular weight of approximately 1.5 - 2 kDa. When combined, these proteins mimic the function of animal derived keratin. Enhance moisturisation and conditioning properties in skin and hair care applications.

BENEFITS - Conditioning, Film-Former, Moisturising, Soothing

USE LEVEL - 1 - 5%



20037 ACB Quinoa Protein

Aqua & Hydrolyzed Quinoa & Leuconostoc/Radish Root Ferment Filtrate

The high protein content and rich source of essential amino acids found in quinoa provides an exceptional alternative to animal derived hydrolyzed proteins. Promote skin and hair hydration, film-forming and conditioning without irritation.

BENEFITS - Conditioning, Film-Forming, Moisturising, Nourishing

USE LEVEL - 1 - 10%



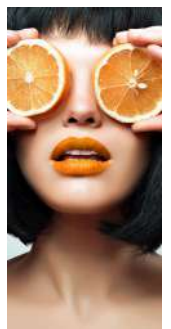
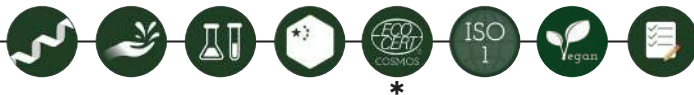
16925 PhytoCycle® Orange

Aqua & Citrus Aurantium Dulcis (Orange) Fruit Extract & Lactobacillus Ferment

PhytoCycle™ Orange is a pseudo-protein system derived from upcycled orange fruit waste. A natural active solution for protein sensitivity, hair hydration, humidity protection, and antioxidant protection. PhytoCycle™ Orange is an efficient protein-free alternative for hair care formulations.

BENEFITS - Humidity Protection, Hydrating, Strengthening

USE LEVEL - 1 - 10%



20964 AC Vegan Keratin OS

Prunus armeniaca (apricot) kernel oil & Lens Esculenta (Lentil) Seed Extract & Hydrolyzed Cicer Seed Extract & Chenopodium Quinoa Seed Extract

A vegan and sustainable hydrolyzed keratin alternative in an oil soluble form that consists of hydrolyzed chickpea, lentil, and quinoa proteins. An eco-conscious botanical alternative that effectively increases hair hydration and smooths hair to reduce frizz.

BENEFITS - Conditioning, Film-Forming, Moisturising

USE LEVEL - 1 - 10%





Products with a **PURPOSE**

EFFICACY & TOXICOLOGY TESTING CAPABILITIES FOR PROVEN RESULTS

Our actives are supported by biological concepts, clinical studies, *in vitro* and *in vivo*, and comprehensive marketing documentation to support our customers in positioning their products with the highest market impact.

As new topics of discussion and development arise within the industry, we meet these research challenges head on to provide exceptional products across all industry platforms and stand behind them with efficient and effective testing methods.

In-vitro

- Angiogenesis Tube Assay
- Bacterial and Plant DNA Extract and Quantification (*Polymerase Chain Reaction -PCR*)
- Cellular Detoxification
- COX-II Inhibition Assay
- Free Fatty Acid Quantitation
- Glutathione Assay
- In Vitro Hair Shaft Elongation Assay
- ELISA (*Aquaporin-3 (AQP-3), Hyaluronic Acid, Collagen Type 1, IGF-1, IL-1, IL-6, Transforming Growth Factor β 1 TGF- β 1*)
- Immune Cell Signaling Assay
- Intracellular Calcium Assay
- MDA Lipid Peroxidation
- Melanin Inhibition
- MTT Assay
- Nitric Oxide Synthase
- Neutrophil Elastase Inhibitor Assay
- ORAC & DPPH Antioxidant Capacity
- Oxygen Consumption
- p53 Transcription Factor Assay
- Reactive Oxygen Species (ROS) Assay
- SA- β -gal (*Cellular Aging Model*)
- Scratch Assay for Wound Healing
- Sirius Red Fast Green Collagen
- Total Cellular Protein Assay
- Tyrosinase Inhibition

In-vivo

- Anti-Pollution (Hair & Skin)
- Cellular Renewal
- Color Cosmetics (*Transfer Resistance, Gloss, Shine, Pigment Dispersion*)
- Elasticity
- Moisturization/Hydration (includes Rinse-Off)
- Pigmentation (Erythema & Melanin)
- Transepidermal Water Loss (TEWL)
- Ultrasound Collagen Measurements
- Sebum
- Sensory Analysis/Triangle Tests
- Skin Barrier
- VISIA Skin Analysis (*Spots, Wrinkles, Texture, Pores, UV Spots, Brown Spots, Red Areas, Porphyrins, TruSkin Age, Eyelash Length, Age Simulation, Topographic 3-D Skin Viewer*)

Active Concepts Hair Research Institute

- Assessment of Hair Characteristics
- Hair Color Protection (*L*a*b* & Microscopy)
- Hair Damage Protection Flexabrasion & Tensile Strength (Instron & Favimat)
- Hair Hydration via Gravimetric Analysis
- Half Head Studies
- Humidity Testing
- Scalp Microbiome Determination

ANTICIPATING CUSTOMER NEEDS THROUGH AFFILIATE COMPANIES



Active Micro Technologies (AMT) has focused its efforts on the power of natural compounds, combining cosmetic functionality with antimicrobial activity to develop a range of fermentation-based ingredients that can reduce or eliminate the need for conventional preservatives. AMT strives to continuously improve and add to its sustainable line of natural antimicrobials which offer multifunctional activity.

www.activemicrotechnologies.com



An online supplier of speciality ingredients for personal care. Offering extracts and actives to meet the needs of both formulators and manufacturers. Unlike most suppliers, who have MOQs, we offer the flexibility to purchase the exact amount of product needed. The perfect supply partner for indie brands, start-ups and cosmetic formulating enthusiasts!

www.formulatorsampleshop.eu



USDA-NOP certified organic cosmetic ingredient company, providing the first true cosmetic-grade, Phytogenetix™ verified organic ingredients for the cosmetic industry. Successfully merging the desire for organics with the utility of actives to surpass the demands and constraints faced by today's formulators.

www.arbor-organics.com



ACTIVE TECHNOLOGIES

BIOFERMENTS

BOTANICAL EXTRACTS

COMPLEX ACTIVES

DELIVERY SYSTEMS

ENZYMES

FUNCTIONAL ACTIVES

PROTEINS

ACTIVE CONCEPTS S.R.L.

BAREGGIO, (MILANO) ITALY

TEL +39 02 90360719

www.activeconceptsllc.com - info@activeconcepts.it

Information contained in this technical literature is believed to be accurate and is offered in good faith for the benefit of the customer. The company, however, cannot assume any liability or risk involved in the use of its chemical products since the conditions of use are beyond our control. Statements concerning the possible use of our products are not intended as recommendations to use our products in the infringement of any patent. We make no warranty of any kind, expressed or implied, other than that the material conforms to the applicable standard specification. Freedom from patent infringement is not implied. All information is for investigative purposes only.

